



WELCOME TO

14 - 241 PARKSIDE DRIVE

PORT MOODY



Welcome to the Pinehurst community in Port Moody. Tucked away amidst the Heritage Mountain forest, this immaculate townhome has everything you've been looking for: a quiet backyard overlooking Twin Creeks Park, three bedrooms all on the same level, a side-by-side double garage and a flex room that makes the perfect home office or play area. You'll love the custom built-in pantry, solid surface counters and stainless steel appliances in the kitchen. The generous primary suite has extra high ceilings, a large walk-in closet, a custom wardrobe, and an ensuite bathroom with double sinks. Both the second and third bedrooms easily accommodate double beds with room to spare.







LIVE IN THE
HEART OF
THE FOREST
SURROUNDED
BY PARKS



PROPERTY UPDATES:

- Custom built-in pantry
- Custom built-in wardrobe
- Luxury vinyl plank flooring
- Kitchen cabinets
- Solid surface kitchen counters

NEIGHBOURHOOD:

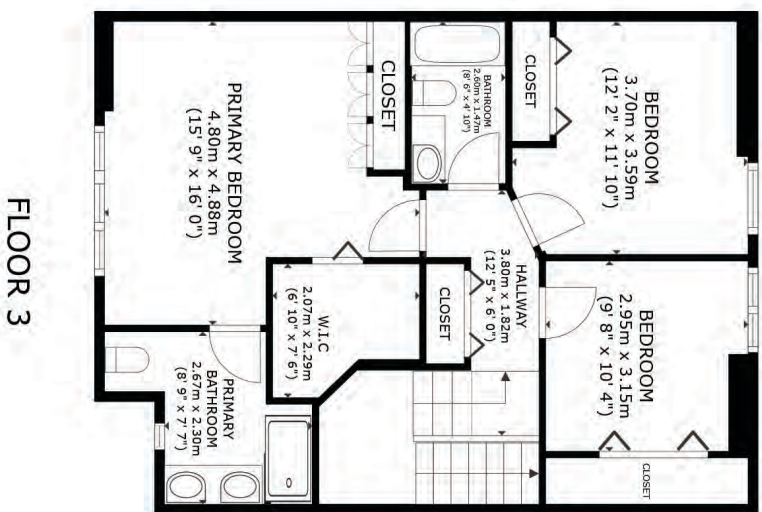
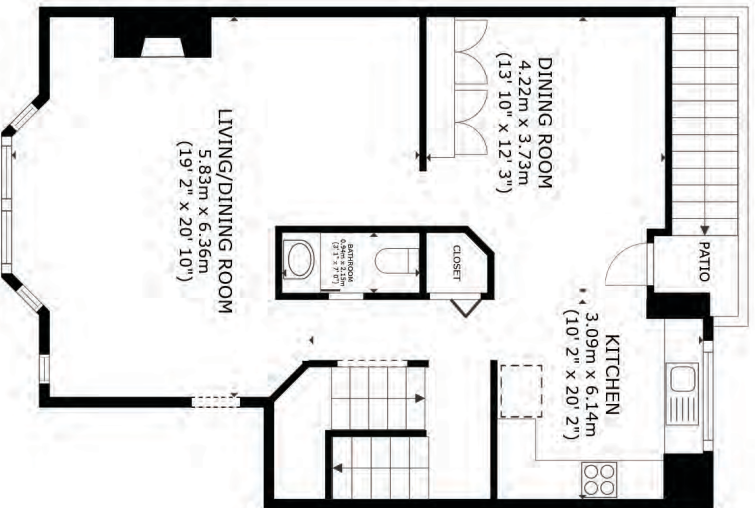
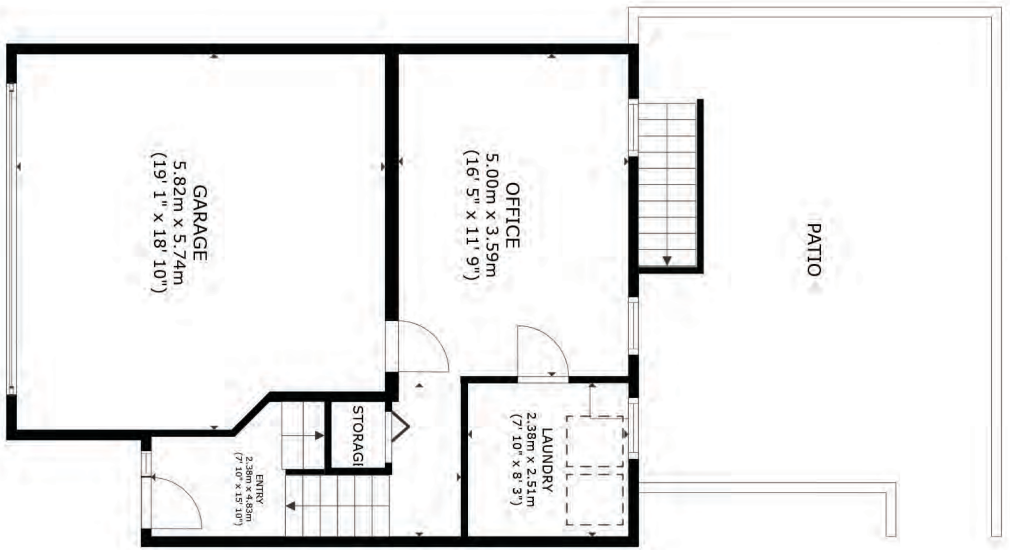
- 1 Min Twin Creeks Park, Playground, Sports Court
- 6 Mins Newport Village
- 7 Mins Suter Brook Village
- 8 Mins Heritage Mountain Community Centre
- 8 Mins Brewers Row
- 12 Mins Rocky Point, Marina, Spray Park, Boardwalk
- 15 Mins White Pine Beach
- 15 Mins Buntzen Lake

SCHOOLS:

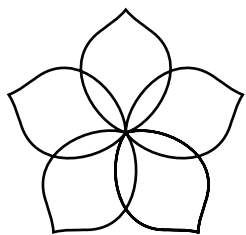
- Catchment Elementry Heritage Mountain
- Catchment Middle Eagle Mountain
- Catchment Secondary Heritage Woods
- Cross Catchment Elementry Aspenwood

COMMUTE:

- 10 Mins walk 183 Port Moody Centre Station bus route
- 6 Mins by car Inlet Skytrain Station
- 10 Mins by car Port Moody Westcoast Express
- 10 Mins by car Highway 7 Junction
- 10 Mins by car Barnet Highway







DOGWOOD REALTY

ELISE WEATHERBY

604-841-7171

ELISE@DOGWOODREALTY.CA
DOGWOODREALTY.CA

